



SPICE QUAY HEIGHTS, SHAD THAMES

£3,299,950



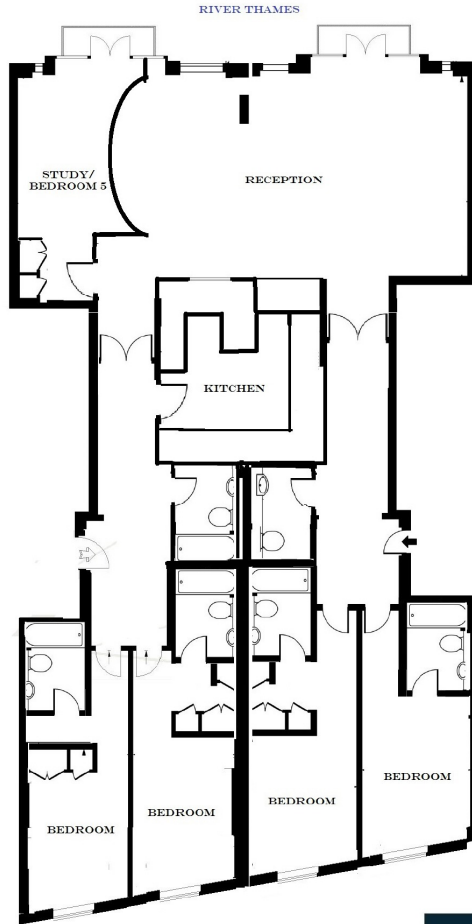
An extremely spacious river-fronting 2,543 sq ft (236 sqm) four/five bedroom apartment in Spice Quay Heights, formed from the joining of two apartments to create an entirely unique space. The property offers uninterrupted views both up and down river from its two balconies, two secure parking spaces and within the development a 24 hour concierge service, indoor swimming pool, resident's gymnasium and a prime position on Shad Thames. Available chain-free to view immediately.







SPICE QUAY HEIGHTS, 32 SHAD THAMES, LONDON SE1
THIRD FLOOR
APPROXIMATE GROSS INTERNAL AREA 2,543 SQ FT / 236 SQM



REPRESENTATION OF CURRENT LAYOUT
COPYRIGHT PRIME LONDON

