



Shoreham-By-Sea, Sussex BN43 6YH

£319,950

**shore
estates**



Shirley Close

Shoreham-By-Sea, Sussex

Deceptively spacious family home positioned in this most desirable family orientated location. This wonderful family home briefly consists of a welcoming entrance leading into a separate lounge, spacious modern fitted kitchen with dining area, rear double glazed conservatory, four bedrooms split over the first and second floors. There is also a family sized luxury bathroom on the first floor and a modern shower room on the second competing the internal accommodation. Outside boasts large mainly laid to lawn front and rear enclosed gardens with a Southern aspect to front. The property is located just a stones through away from Shoreham Academy with is located in Kingston Lane for access.

Fantastic shopping facilities are also close by in Holmbush if you travel north up Stoney Lane, where you can also find access to the Shoreham by pass giving access for commuting either travelling west or east, or for access on to the A23 if you require to travel to London and beyond.

For more information or to arrange a viewing call shore estates 01273 830555

- Semi Detached House
- Four Bedrooms
- Front & Rear Gardens
- Double Glazed Conservatory
- Separate Lounge
- Modern Fitted Kitchen
- Luxury Bathroom & Shower Room
- Shoreham Academy Close By
- Dining Area



Entrance Hall

Separate Lounge

12'11" 11'6" (3.96m 3.51m)

Modern Fitted Kitchen

12'11" 7'6" (3.96m 2.29m)

Dining Area

7'6" 6'0" (2.29m 1.83m)

Double Glazed Conservatory

12'7" 9'6" (3.84m 2.92m)

First Floor Landing

Bedroom One

11'3" 9'6" (3.45m 2.92m)

Bedroom Two

12'7" 9'1" (3.86m 2.77m)

Luxury Family Bathroom

5'1" 6'3" (1.57m 1.93m)

Second Floor Landing

Bedroom Three

10'11" 6'7" (3.35m 2.01m)

Bedroom Four

10'9" 6'11" (3.28m 2.13m)

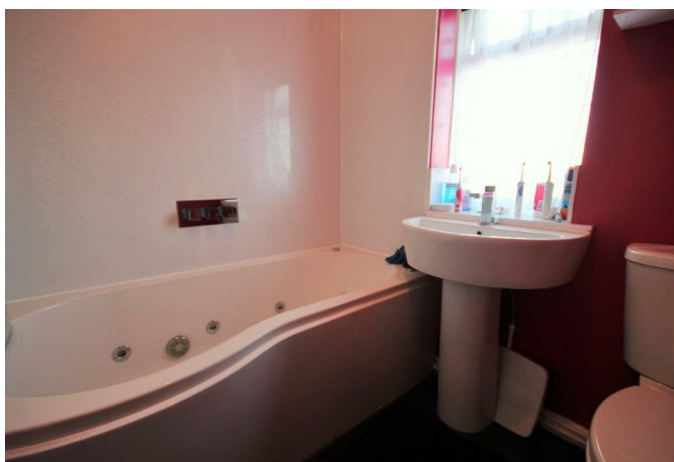
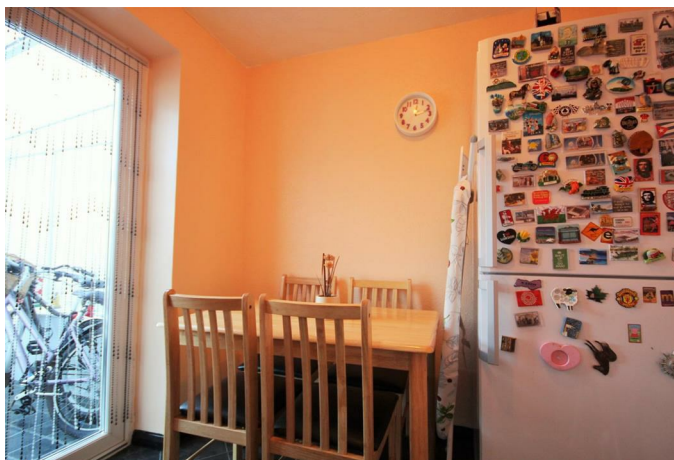
Modern Shower Room

5'8" 5'10" (1.73m 1.80m)

Outside Accommodation

Front South Facing Garden

Rear Enclosed Garden



Shore House 1-2 Middle Street, Shoreham-by-Sea, West Sussex, BN43 5DP

t: 01273 830555

f: 01273 830550

e: office@shoreestates.co.uk

w: shoreestates.co.uk



sales • lettings • finance