



Cheshunt: Tel: 01992 621116

www.jrpropertieservices.co.uk

Cuffley: Tel: 01707 872111



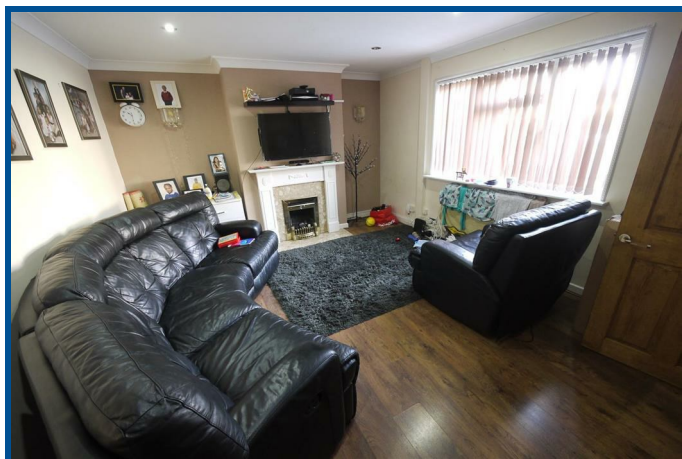
SWANFIELD ROAD WALTHAM CROSS

A Three bedroomed terraced house conveniently located close to local amenities, schools & within walking distance of Waltham Cross & Theobalds Grove British Rail. Benefitting from Driveway Parking, Gas Central Heating and Double Glazing.

- THREE BEDROOMS
- GAS HEATING
- DOUBLE GLAZING
- REAR GARDEN
- UPSTAIRS BATHROOM
- DRIVEWAY

£339,995 FREEHOLD

VIEWING RECOMMENDED!



Cuffley: 24 Station Road, Cuffley, Herts EN6 4HT
email: cuffley@jrpropertieservices.co.uk

Cheshunt: 56 Turners Hill, Cheshunt, Herts EN8 8LQ
email: cheshunt@jrpropertieservices.co.uk

All photographs shown are for illustration only and may show items that are not for sale or included in the sale of the property. Please note that all measurements have a 5% tolerance level. 'None of the statements contained in these particulars as to this property are to be relied on as statements of representation of fact.'



DOUBLE GLAZED PORCH

UPVC double glazed door :-

HALLWAY

Radiator. Dado rail. Laminate floor. Stairs to first floor. Door to:-

LOUNGE

15'5 x 12'3 (4.70m x 3.73m)

Double glazed to front. Radiator. laminate floor. Coving and inset spotlights to ceiling. Fireplace with marble hearth and wooden surround. Wall lights. Door to:-



LEAN TO

15'6 x 10'8 (4.72m x 3.25m)

Double glazed door to garden. Double glazed window to rear. Laminate floor.

KITCHEN

12'4 x 8 (3.76m x 2.44m)

Understairs storage. Coving to ceiling. Laminate floor. Wall and base fitted units with roll edge work surfaces over. Tiled splash backs. Stainless steel sink with mixer tap and drainer. Radiator. Plumbing for washing machine and dishwasher. Space for tall fridge freezer. Four burner gas hob. Electric oven. Extractor fan. Door to:-



LANDING

Access to loft space. Doors to:-

BEDROOM 1

18'6 x 9'10 (5.64m x 3.00m)

Double glazed window to rear. Double radiator. Fitted wardrobes with bed recess. Wall mounted boiler.

BEDROOM 2

8'9 x 6'10 (2.67m x 2.08m)

Double glazed to front. Radiator.

BEDROOM 3

12'9 x 10'7 (3.89m x 3.23m)

Double glazed window to front. Radiator. Fitted wardrobes.

BATHROOM

Opaque double glazed windows to front. Low flush WC, vanity wash hand basin with mixer tap and cupboard under, shower bath with mixer tap. Chrome towel radiator. Extensively tiled walls and floor. Coving to ceiling.



GARDEN

44' (13.41m)

South facing with patio and lawned area.