

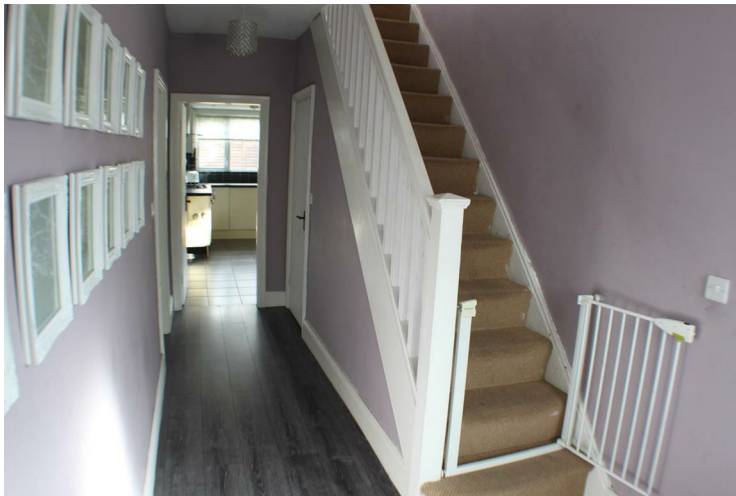
Venesta Avenue, Salford, M6 8FE



Offers over £215,000

****NO CHAIN**** Barlow White are please to bring to the market this **THREE BED SEMI DETACHED** property in the heart of M6. This **WELL PRESENTED** property comprises of **PORCH, HALLWAY, DOWNSTAIRS W/C, LOUNGE, DINING ROOM, MODERN KITCHEN** and upstairs you will find **THREE BEDROOMS** and a **MODERN BATHROOM**. With **UPVC double glazed windows, GAS CENTRAL HEATING, LARGE REAR GARDEN** and a **BLOCK PAVED DRIVEWAY** with parking for 3-4 cars! Located close to **SALFORD ROYAL HOSPITAL**, with good transport links to **MANCHESTER CITY CENTRE** and **SALFORD QUAYS/MEDIA CITY**. **WILL SELL QUICKLY**. To arrange a viewing please call Barlow White on 0161 7880909

Hallway



Leading from an enclosed porch with power points, telephone connection, radiator, alarm panel, front and side windows. Understairs you will find a toilet and hand basin, with fully tiled walls and floor.

Lounge

11'11 x 11'4 (3.63m x 3.45m)



Well presented with a front aspect bay window, power points, TV aerial, telephone connection, radiator and laminate flooring.

Dining Room

12'8 x 11'4 (3.86m x 3.45m)



With French doors leading to the rear garden, power points, radiator and laminate flooring.

Kitchen



A modern kitchen with floor standing and wall mounted units in cream with a co-ordinating black work surface, stainless steel sink and drainer, an electric over with a gas hob and extractor. With integrated fridge and freezer and space for a washer and dryer. Rear and side aspect windows, side external door, tiled floor and part tiled walls.

Bathroom

7'3 x 6'6 (2.21m x 1.98m)



Three piece white bathroom suite with chrome fittings, comprising of P Shaped bath with mainS connected shower above, pedestal sink and w/c. With spot lights, towel radiator, tiled flooring and part tiled walls.

Bedroom One

12'8 x 11'5 (3.86m x 3.48m)



Rear aspect window, laminate flooring, power points, TV aerial and radiator.

Bedroom Two

12'0 x 10'7 (3.66m x 3.23m)



Front aspect window, laminate flooring, power points, TV aerial and radiator.

Bedroom Three

8'11 x 7'3 (2.72m x 2.21m)



Front aspect window, laminate flooring, power points and radiator.

