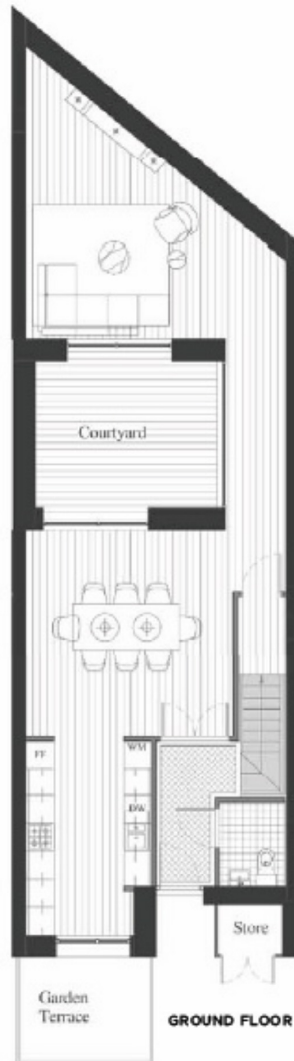




TOWNHOUSE, ADMIRALTY BUILDING, ROYAL
£826,000

**TOWNHOUSE, THE ADMIRALTY BUILDING
 ROYAL WHARF, E16**

APPROXIMATE GROSS INTERNAL AREA
 1,770 SQ FT / 164.4 SQM



Kitchen area: 4200 mm x 2690 mm	First floor terrace: 36.0 sq.m / 387 sq.ft
Dining area: 4440 mm x 4420 mm	Second floor balcony: 4.8 sq.m / 52 sq.ft
Living area: 5545 mm x 4450 mm	Garden terrace: 8.5 sq.m / 70 sq.ft
Bedroom 1: 4425 mm x 3160 mm	Courtyards: 12.7 sq.m / 137 sq.ft
Bedroom 2: 4200 mm x 3160 mm	Bedroom 3: 7150 mm x 3160 mm



FIRST FLOOR

SECOND FLOOR