



Guide Price £375,000 - £400,000 Freehold

For Sale

Rental Yield: 4.05%

Holmes Close, Purley CR8 4AT



www.martincolondon.com

MARTIN&CO

0208 688 8565

croydon@martinco.com

145 Brighton Road, South Croydon, Surrey, CR2 6EF

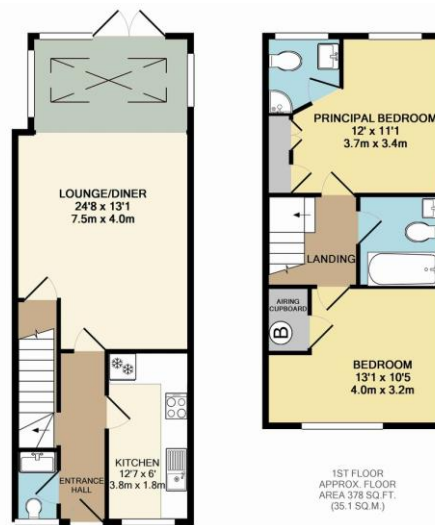
Accuracy: Whilst we endeavour to make our sales details accurate and reliable, if there is any point which is of particular importance to you, please contact the office and we will be pleased to check the information. Do so, particularly if contemplating travelling some distance to view the property. Sonic / laser Tape: All measurements have been taken using a sonic / laser tape measure and therefore, may be subject to a small margin of error. Services Not tested: The mention of any appliances and/or services within these Sales Particulars does not imply they are in full and efficient working order. All Measurements: All Measurements are Approximate: Mortgage & Financial Advice: The Martin & Co mortgage service is provided by London & Country Mortgages the UK's largest Independent Fee-Free mortgage broker of Beazer House, Lower Bristol Road, Bath, BA2 3BA. Authorised and regulated by the Financial Conduct Authority. Their FCA number is 143002. YOUR HOME IS AT RISK IF YOU DO NOT KEEP UP REPAYMENTS ON A MORTGAGE OR OTHER LOANS SECURED ON IT. Full written quotation available on request. A suitable life policy may be required. Loans subject to status. Minimum age 18.

For Sale Guide Price £375,000 to £400,000 Freehold

A Contemporary Build Two Double Bedroom House

OFFERED FOR SALE CHAIN FREE. A modern 2 double bedroom mid-terrace house with extended sitting room leading to own patio garden, modern fitted kitchen with appliances, two bathrooms (one ensuite), downstairs WC, gas central heating and allocated parking. Set in a secluded cul-de-sac off Reedham Drive, Purley and close to a variety of amenities including local shops and Reedham train station. Purley town centre is within one mile and offers a wide and varied range of shopping, leisure and transport facilities. Viewing highly recommended.

- Modern Mid-Terrace House
- Two Double Bedrooms
- Two Bathrooms (One ensuite)
- Downstairs Cloakroom
- Modern Kitchen With Appliances
- Gas Central Heating
- Patio Garden
- Chain Free



Whilst every attempt has been made to ensure the accuracy of the floor plan contained here, measurements of doors, windows, rooms and any other items are approximate and no responsibility is taken for any error, omission, or mis-statement. This plan is for illustrative purposes only and should be used as such by any prospective purchaser. The services, systems and appliances shown have not been tested and no guarantee



www.martincolondon.com

MARTIN&CO

0208 688 8565

croydon@martinco.com

145 Brighton Road, South Croydon, Surrey, CR2 6EF

Accuracy: Whilst we endeavour to make our sales details accurate and reliable, if there is any point which is of particular importance to you, please contact the office and we will be pleased to check the information. Do so, particularly if contemplating travelling some distance to view the property. Sonic / Laser Tape: All measurements have been taken using a sonic / laser tape measure and therefore, may be subject to a small margin of error. Services Not tested: The mention of any appliances and/or services within these Sales Particulars does not imply they are in full and efficient working order. All Measurements: All Measurements are Approximate: Mortgage & Financial Advice: The Martin & Co mortgage service is provided by London & Country Mortgages the UK's largest Independent Fee-Free mortgage broker of Beazer House, Lower Bristol Road, Bath, BA2 3BA. Authorised and regulated by the Financial Conduct Authority. Their FCA number is 143002. YOUR HOME IS AT RISK IF YOU DO NOT KEEP UP REPAYMENTS ON A MORTGAGE OR OTHER LOANS SECURED ON IT. Full written quotation available on request. A suitable life policy may be required. Loans subject to status. Minimum age 18.