



NOTTINGHAM PLACE W1

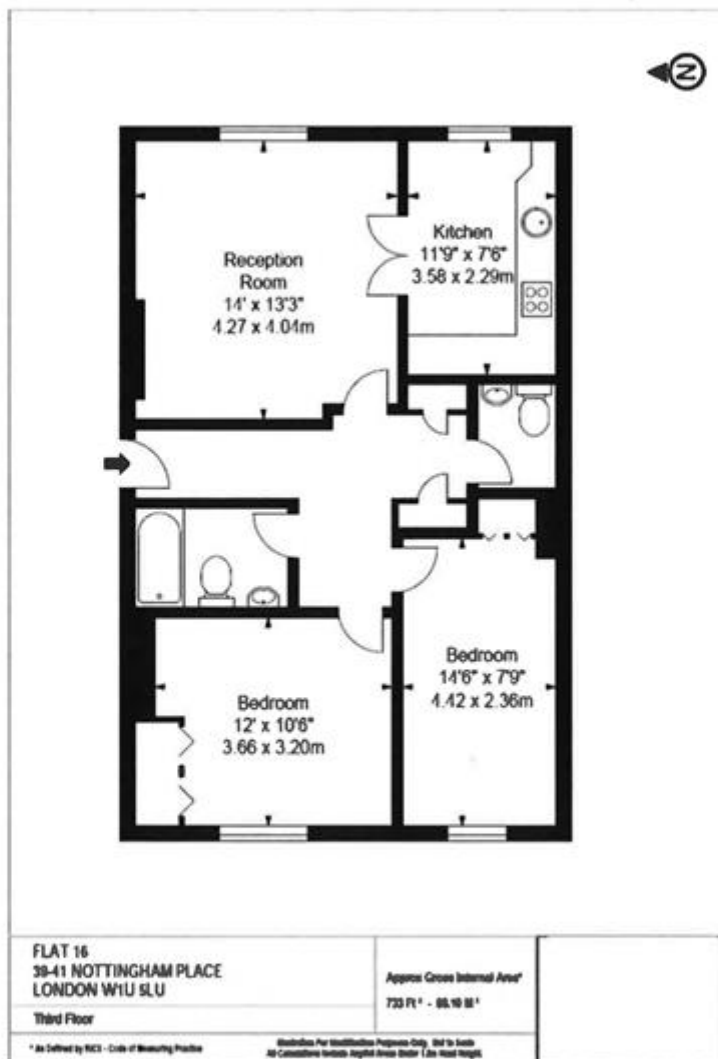
Price
£700 per week

Newly refurbished spacious 2 Bed apartment. Situated directly off Marylebone Road and Marylebone High Street, the flat is ideally located to enjoy the many highlights that Marylebone has to offer. This two bedroom apartment on the third floor comprising of large reception with high ceilings, fully fitted kitchen and contemporary fitted bathroom within a red brick period building in the heart of Marylebone. The nearest underground station is Baker Street, which is served by the Jubilee, Bakerloo and Hammersmith and City lines and Regent's Park.

Details

- 2 Bedrooms
- Bathroom
- Reception room
- Kitchen
- Lift
- Day Porter





Terms and Conditions

Available: Available Now For Long Let
Price: £700 per week

EPC Information

Energy Performance Certificate

Flat 16, 39-41 Nottingham Place, LONDON, W1U 5LU

Dwelling type: Mid-floor flat **Reference number:** 0405-2842-7791-9527-8795
Date of assessment: 22 January 2013 **Type of assessment:** RdSAP, existing dwelling
Date of certificate: 28 January 2013 **Total floor area:** 69 m²

Use this document to:

- Compare current ratings of properties to see which properties are more energy efficient
- Find out how you can save energy and money by installing improvement measures

Estimated energy costs of dwelling for 3 years:	£ 1,722
Over 3 years you could save	£ 822

Estimated energy costs of this home

	Current costs	Potential costs	Potential future savings
Lighting	£ 255 over 3 years	£ 138 over 3 years	
Heating	£ 1,005 over 3 years	£ 363 over 3 years	
Hot Water	£ 462 over 3 years	£ 399 over 3 years	
Totals	£ 1,722	£ 900	<div style="background-color: #0070C0; color: white; padding: 5px; width: fit-content; margin: 0 auto;"> You could save £ 822 over 3 years </div>

These figures show how much the average household would spend in this property for heating, lighting and hot water. This excludes energy use for running appliances like TVs, computers and cookers, and any electricity generated by microgeneration.

Energy Efficiency Rating

The graph shows the current energy efficiency of your home.

The higher the rating the lower your fuel bills are likely to be.

The potential rating shows the effect of undertaking the recommendations on page 3.

The average energy efficiency rating for a dwelling in England and Wales is band D (rating 60).

Top actions you can take to save money and make your home more efficient

Recommended measures	Indicative cost	Typical savings over 3 years	Available with Green Deal
1 Internal or external wall insulation	£4,000 - £14,000	£ 495	✔
2 Low energy lighting for all fixed outlets	£ 40	£ 87	✔
3 Fan-assisted storage heaters	£1,200 - £1,600	£ 240	⚠

To find out more about the recommended measures and other actions you could take today to save money, visit www.direct.gov.uk/savingenergy or call 0300 123 1234 (standard national rate). The Green Deal may allow you to make your home warmer and cheaper to run at no up-front cost.

Page 1 of 4

SUBJECT TO CONTRACT

VIEWING STRICTLY BY APPOINTMENT