



SOUTHWICK STREET, PADDINGTON, W2.

Price
£595 per week

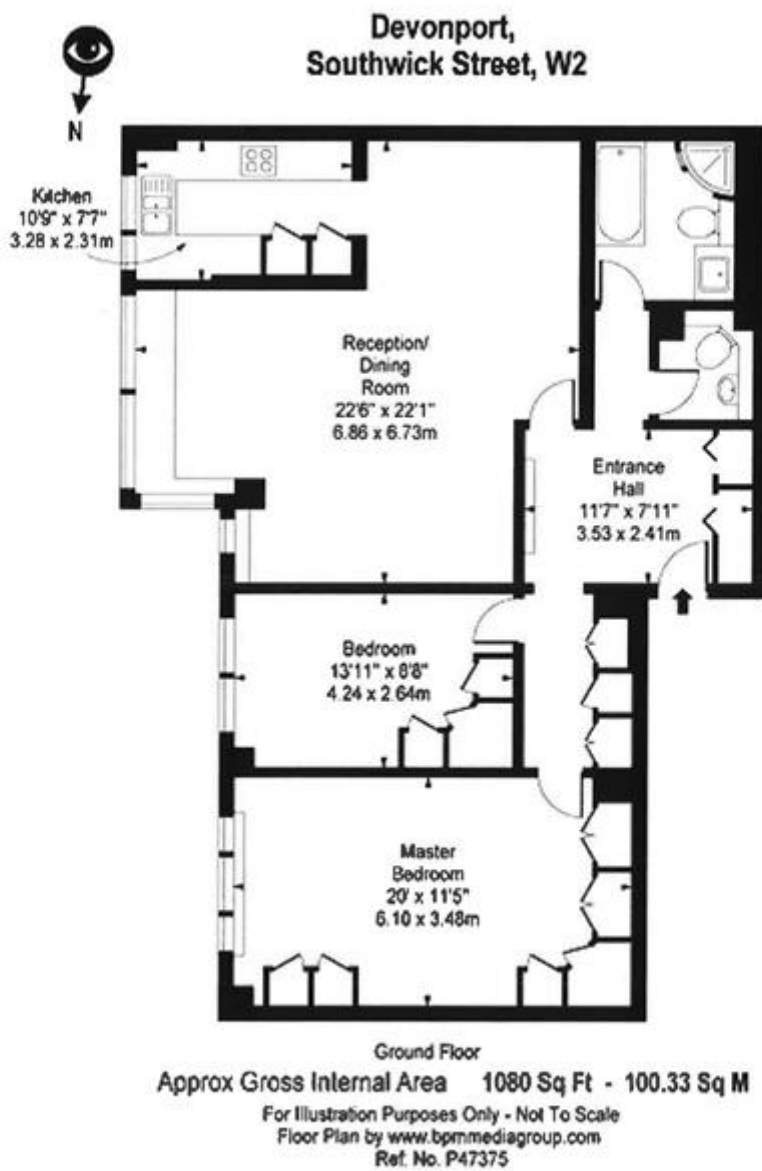
Attractive two bedroom ground floor apartment. This two bedroom apartment has wooden floors throughout, located on the ground floor of this prestigious purpose built block with newly refurbished common parts, lovely communal gardens and twenty four hour portorage.

The block is centrally located between Paddington Station and Marble Arch close to Hyde Park.

Details

- 2 Bedrooms
- Bathroom
- Reception Room
- Kitchen
- Communal Gardens

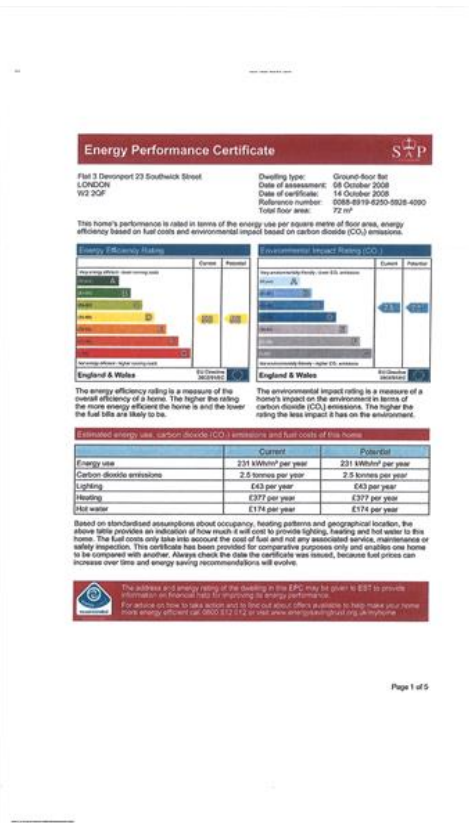




Terms and Conditions

Available: Available Now For Long Let
Price: £595 per week

EPC Information



SUBJECT TO CONTRACT

VIEWING STRICTLY BY APPOINTMENT