



Offers Over £260,000 Leasehold + Share Freehold For Sale

Broomhall Road, South Croydon



www.martincolondon.com

MARTIN&CO

0208 688 8565

croydon@martinco.com

145 Brighton Road, South Croydon, Surrey, CR2 6EF

Accuracy: Whilst we endeavour to make our sales details accurate and reliable, if there is any point which is of particular importance to you, please contact the office and we will be pleased to check the information. Do so, particularly if contemplating travelling some distance to view the property. Sonic / laser Tape: All measurements have been taken using a sonic / laser tape measure and therefore, may be subject to a small margin of error. Services Not tested: The mention of any appliances and/or services within these Sales Particulars does not imply they are in full and efficient working order. All Measurements: All Measurements are Approximate: Mortgage & Financial Advice: The Martin & Co mortgage service is provided by London & Country Mortgages the UK's largest Independent Fee-Free mortgage broker of Beazer House, Lower Bristol Road, Bath, BA2 3BA. Authorised and regulated by the Financial Conduct Authority. Their FCA number is 143002. YOUR HOME IS AT RISK IF YOU DO NOT KEEP UP REPAYMENTS ON A MORTGAGE OR OTHER LOANS SECURED ON IT. Full written quotation available on request. A suitable life policy may be required. Loans subject to status. Minimum age 18.

Offers Over **£260,000** Leasehold + Share Freehold

2 Bedroom Flat

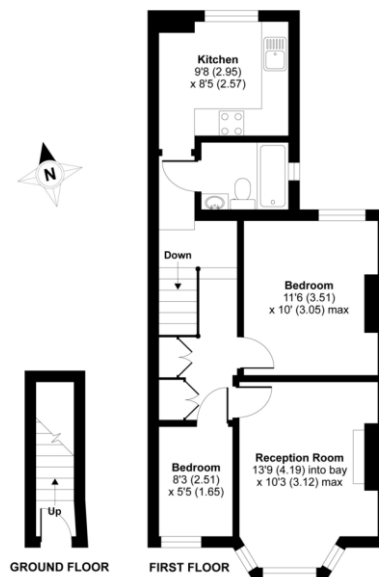
Don't miss out on this attractive first floor 2 bedroom flat, less than 5 minutes walk of Sanderstead Mainline Station.

Accommodation comprises a reception room with tall ceilings and a bay window, double and a single bedroom, kitchen and a bathroom. With a long lease plus a **SHARE OF THE FREEHOLD**, gas central heating with a new boiler and double glazed windows, this is an ideal first time purchase or suitable as a buy to let opportunity. Sole Agents. **NO CHAIN**.

- 2 BEDROOMS
- FIRST FLOOR
- PERIOD CONVERSION
- CLOSE TO STATION
- WELL PRESENTED
- TALL CEILINGS
- LONG LEASE
- SHARE OF FREEHOLD
- NO CHAIN



Broomhall Road, South Croydon, CR2
APPROX. GROSS INTERNAL FLOOR AREA 573 SQ FT 53.2 SQ METRES



www.martincolondon.com

MARTIN & CO

0208 688 8565

croydon@martinco.com

145 Brighton Road, South Croydon, Surrey, CR2 6EF

Accuracy: Whilst we endeavour to make our sales details accurate and reliable, if there is any point which is of particular importance to you, please contact the office and we will be pleased to check the information. Do so, particularly if contemplating travelling some distance to view the property. Sonic / Laser Tape: All measurements have been taken using a sonic / laser tape measure and therefore, may be subject to a small margin of error. Services Not tested: The mention of any appliances and/or services within these Sales Particulars does not imply they are in full and efficient working order. All Measurements: All Measurements are Approximate: Mortgage & Financial Advice: The Martin & Co mortgage service is provided by London & Country Mortgages the UK's largest Independent Fee-Free mortgage broker of Beazer House, Lower Bristol Road, Bath, BA2 3BA. Authorised and regulated by the Financial Conduct Authority. Their FCA number is 143002. YOUR HOME IS AT RISK IF YOU DO NOT KEEP UP REPAYMENTS ON A MORTGAGE OR OTHER LOANS SECURED ON IT. Full written quotation available on request. A suitable life policy may be required. Loans subject to status. Minimum age 18.