





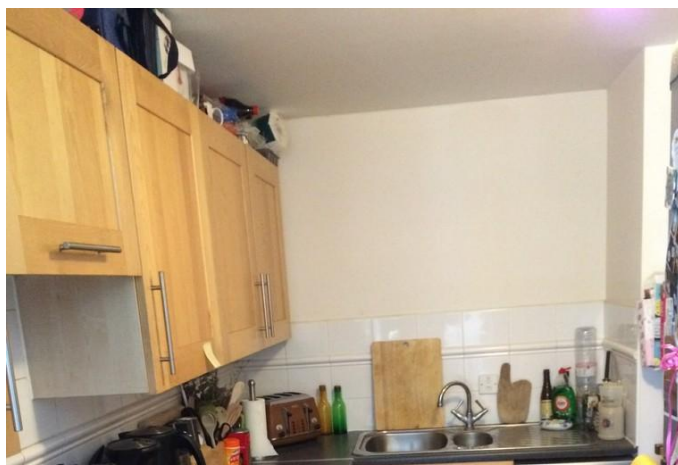
A very well presented, bright and spacious two bedroom, two bathroom, first floor apartment, part of the highly sought after Millennium Quay development which fronts onto the river, boasting impressive views of Canary Wharf. The development has large, well maintained communal garden areas and a picturesque river walk to Greenwich town centre.

Featuring two expansive double bedrooms, a family bathroom and an ensuite shower room. There is also a lovely 18sqm reception room with ceiling to floor windows providing river facing views with a Canary Wharf backdrop. The kitchen and bathrooms are finished to the very high platinum spec with integrated appliances. The off-street resident's parking is free and unrestricted, and benefits from the gated community and concierge service.

Cutty Sark DLR Station is just over half a mile and Greenwich Station is just under a mile, providing regular service to London Bridge (7mins), Charing Cross (15mins), Cannon Street (12mins), Canary Wharf (10mins) and Bank (20mins).

Greenwich town centre is again just a 10 minute walk away, with the new Waitrose supermarket even nearer; it's a fabulous spot from which to enjoy the array of independent shops, bars and restaurants that the Royal Borough of Greenwich has to offer, specifically the famous Greenwich Market and historically significant Greenwich Park.

Your earliest viewing is essential.

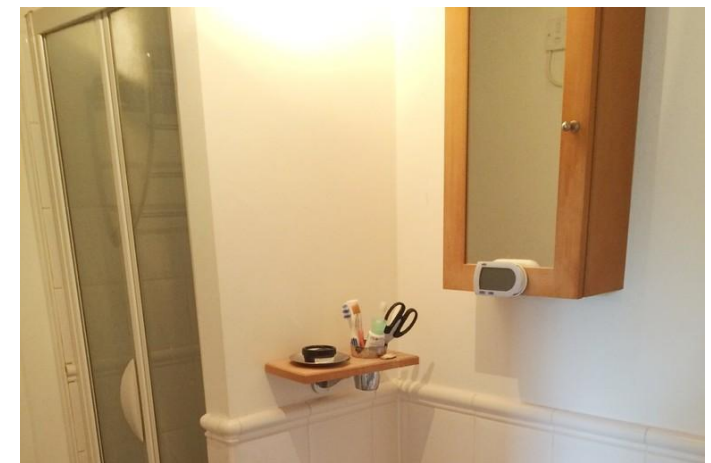
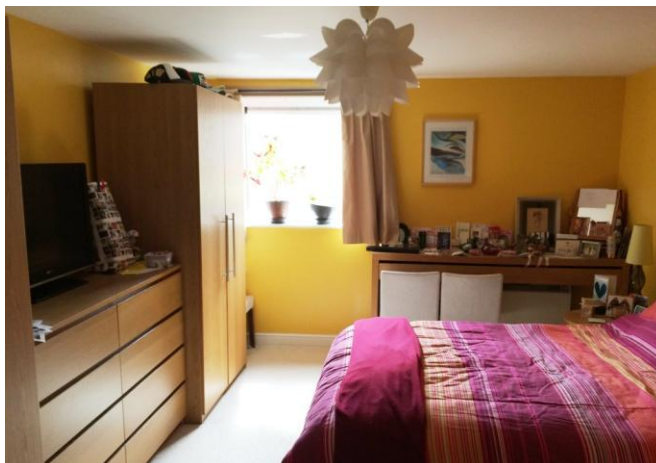


%epcGraph_c_1_326%

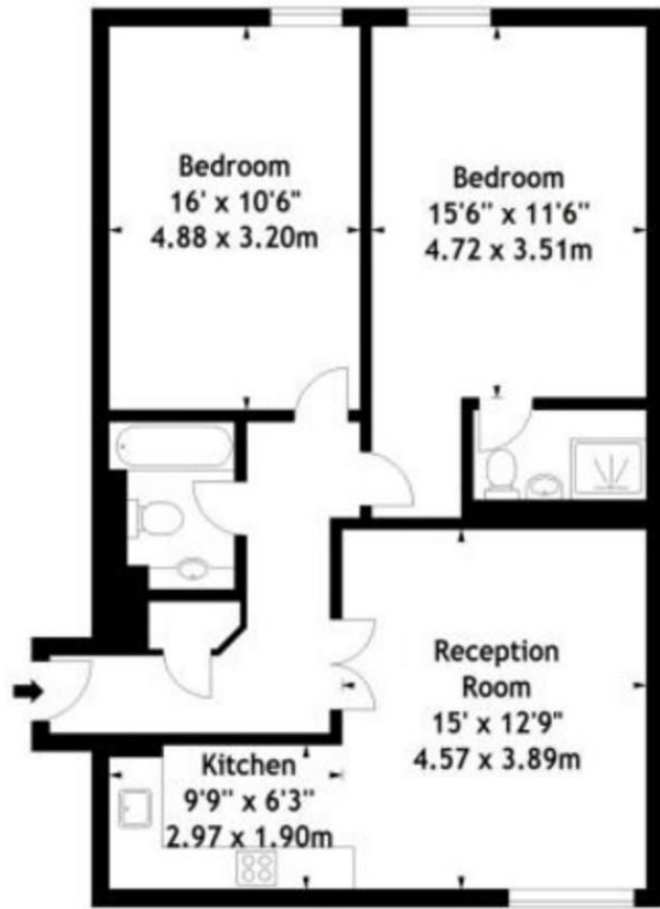
Please refer to

www.jdmestateagents.com

to view our full area guides



Stretton Mansions,
Glaisher Street, SE8
Approx. Gross Internal Area
818 Sq Ft - 75.99 Sq M



First Floor

Measured in accordance with RICS guidelines. Every attempt is made to ensure accuracy, however all measurements are approximate. This floor plan is for illustrative purposes only and is not to scale.
© Datography Ltd 2016
Photographs * Floorplans * Virtual Tours
Tel: 0845 643 4401 www.datography.com

