



**THE WHITEHOUSE APARTMENTS, SOUTH BANK**

**£2,750,000**

  
**PRIME LONDON**

A bespoke designed and completely individual penthouse apartment on the South Bank, offering the highest of specifications and unrivalled views of the River and Central London. The property features a climate control throughout, under floor heating, Rako lighting and a SONOS sound system. The bright reception and diner leads down to two double bedrooms, each beautifully designed and offering plentiful storage, en suite facilities and balcony access.

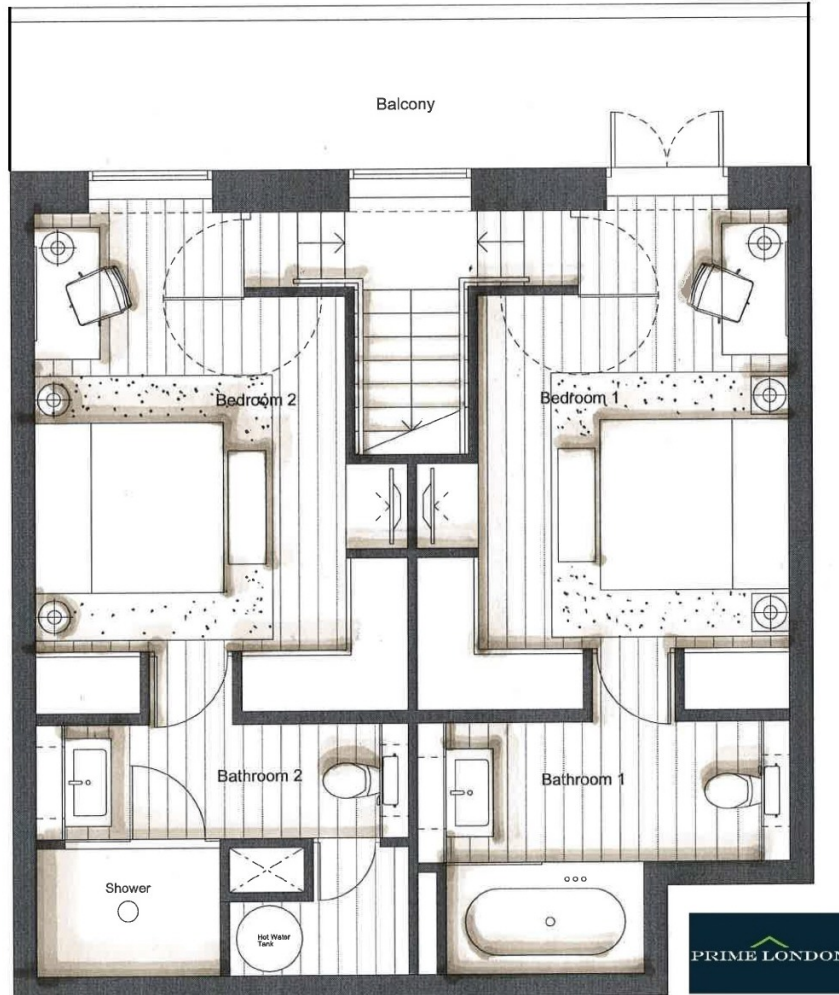
Residents of the Whitehouse Apartments enjoy exclusive use of the superior on-site facilities, namely a well maintained courtyard garden, gymnasium, indoor heated swimming pool, spa and expansive rooftop terrace. Within walking distance of the South Bank's many amenities as well as Waterloo and Westminster stations, the location provides direct transport links into the City and West End.







**THE WHITEHOUSE APARTMENTS, 9 BELVEDERE ROAD, SOUTH BANK, LONDON SE1**



**PENTHOUSE (11TH AND 12TH FLOORS)  
APPROXIMATE GROSS INTERNAL AREA  
1,353 SQ FT / 125.7 SQM**

