

## Westbourne Arcade, Bournemouth, Dorset BH4 9AY



**£110 Per Week**



**FURNISHED ROOM WITH ALL BILLS INCLUDED** - Situated in the heart of Westbourne, this furnished double room has a double bed, a wardrobe and chest of drawers included.

## FURNISHED ROOM WITH ALL BILLS INCLUDED -

Situated in the heart of Westbourne, this furnished double room has a double bed, a wardrobe and chest of drawers included. There is a good sized communal kitchen/breakfast room as well as a communal shower room and additional WC.

There are five rooms in total. One has its own bathroom and the other four share the shower room.

WIFI is also included in the rent. There is gas central heating too.

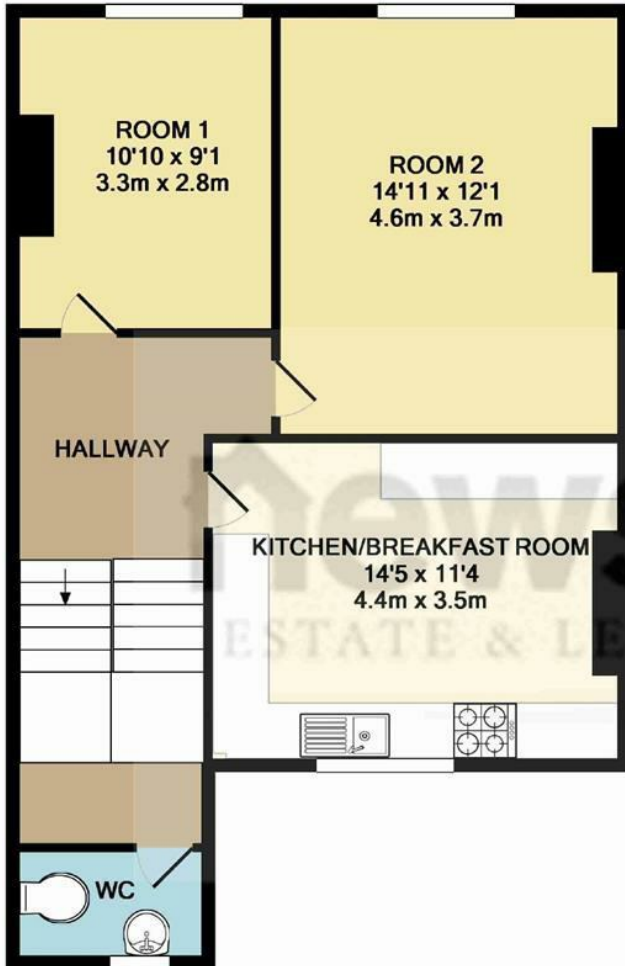
Located in Westbourne Arcade, this room would be ideal for anyone working nearby. It has easy access to Bournemouth and Poole as well as being amongst the many conveniences of Westbourne high street.

Available from 7th November 2016

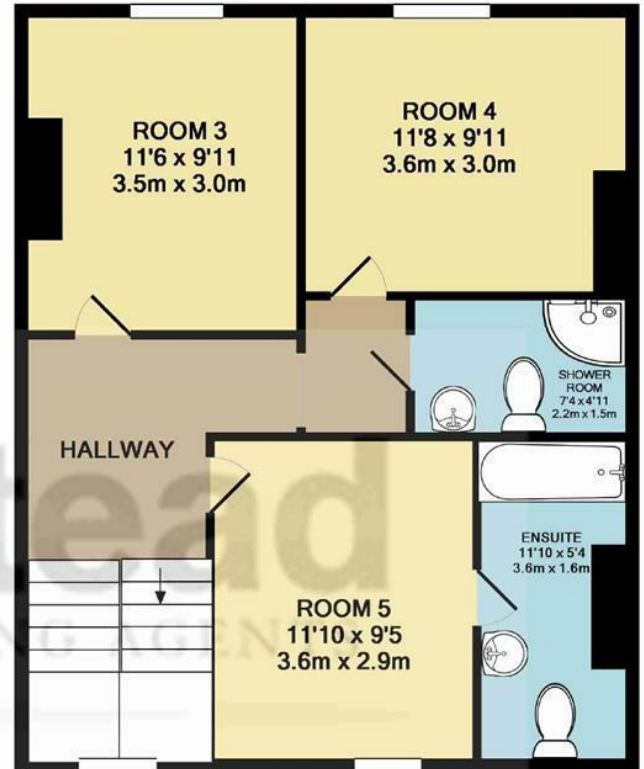
No DSS

No couples, only single occupants





1ST FLOOR



2ND FLOOR

Whilst every attempt has been made to ensure the accuracy of the floor plan contained here, measurements of doors, windows, rooms and any other items are approximate and no responsibility is taken for any error, omission, or mis-statement. This plan is for illustrative purposes only and should be used as such by any prospective purchaser. The services, systems and appliances shown have not been tested and no guarantee as to their operability or efficiency can be given  
Made with Metropix ©2014

Energy Efficiency Rating		Current	Potential
Very energy efficient - lower running costs			
(92 plus) <b>A</b>			
(81-91) <b>B</b>			
(69-80) <b>C</b>			
(55-68) <b>D</b>			
(39-54) <b>E</b>			
(21-38) <b>F</b>			
(1-20) <b>G</b>			
Not energy efficient - higher running costs			
<b>England &amp; Wales</b>	EU Directive 2002/91/EC		

Environmental Impact (CO <sub>2</sub> ) Rating		Current	Potential
Very environmentally friendly - lower CO <sub>2</sub> emissions			
(92 plus) <b>A</b>			
(81-91) <b>B</b>			
(69-80) <b>C</b>			
(55-68) <b>D</b>			
(39-54) <b>E</b>			
(21-38) <b>F</b>			
(1-20) <b>G</b>			
Not environmentally friendly - higher CO <sub>2</sub> emissions			
<b>England &amp; Wales</b>	EU Directive 2002/91/EC		