

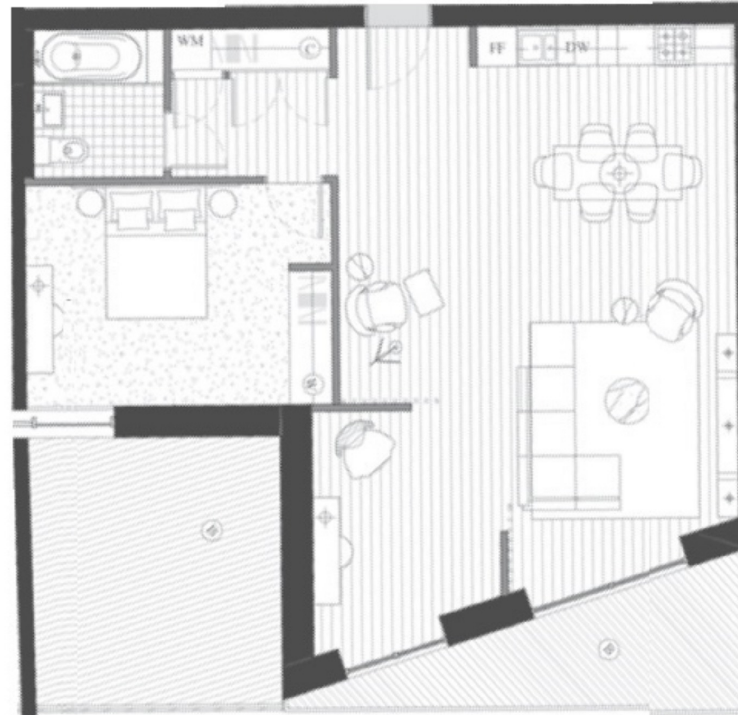


ANCHOR BUILDING, ROYAL WHARF

£406,000



ANCHOR BUILDING, ROYAL WHARF, E16



Internal area:

77.2 sq.m / 831 sq.ft

Living area:

5980 mm x 8030 mm

Bedroom 1:

3300 mm x 4600 mm

Balcony:

24.8 sq.m / 267 sq.ft

