

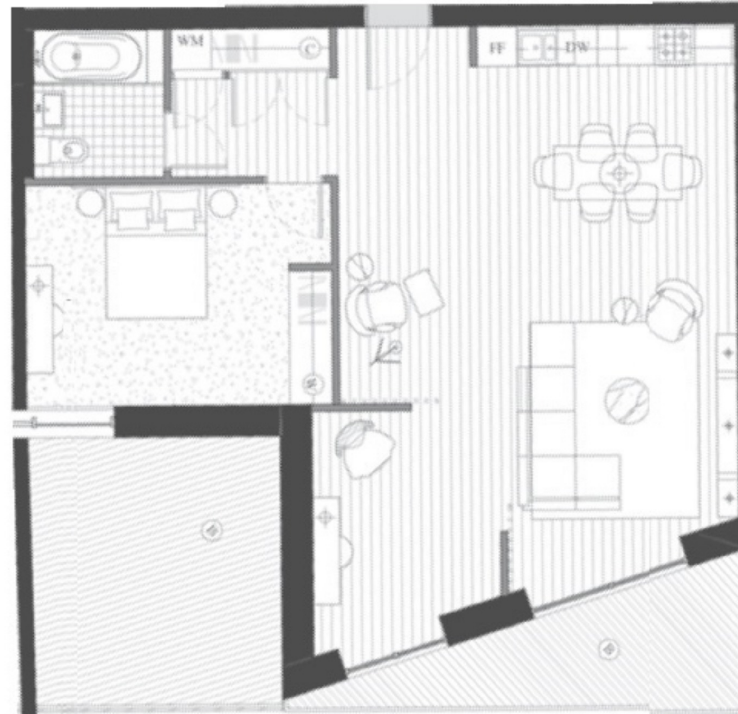


ANCHOR BUILDING, ROYAL WHARF

£406,000



ANCHOR BUILDING, ROYAL WHARF, E16



Internal area: 77.2 sq.m / 831 sq.ft
Living area: 5980 mm x 8030 mm
Bedroom 1: 3300 mm x 4600 mm
Balcony: 24.8 sq.m / 267 sq.ft

