



**COLUMBUS HOUSE, ENDERBY WHARF,  
£375,000**

An extremely generous 564 sq ft second floor apartment in Columbus House at Enderby Wharf, with sizeable balcony, available for purchase for completion on Q2 2016. The property comes complete with a furniture package worth over £4500 and a legal fee contribution of £1000.

Enderby Wharf sits in a unrivalled position in Greenwich with west-facing views to the city and Canary Wharf and over 200 metres of river frontage. This well positioned apartment offers a spacious open plan kitchen/reception room with a large bedroom, finished to an impeccable standard. There is also a large private balcony offering substantial outdoor space. The owner will also benefit from the 5-year Barratt warranty on internal fixtures and fittings as well as the 10-year NHBC Buildings Insurance. The property is offered with the balance of a 999-year leasehold

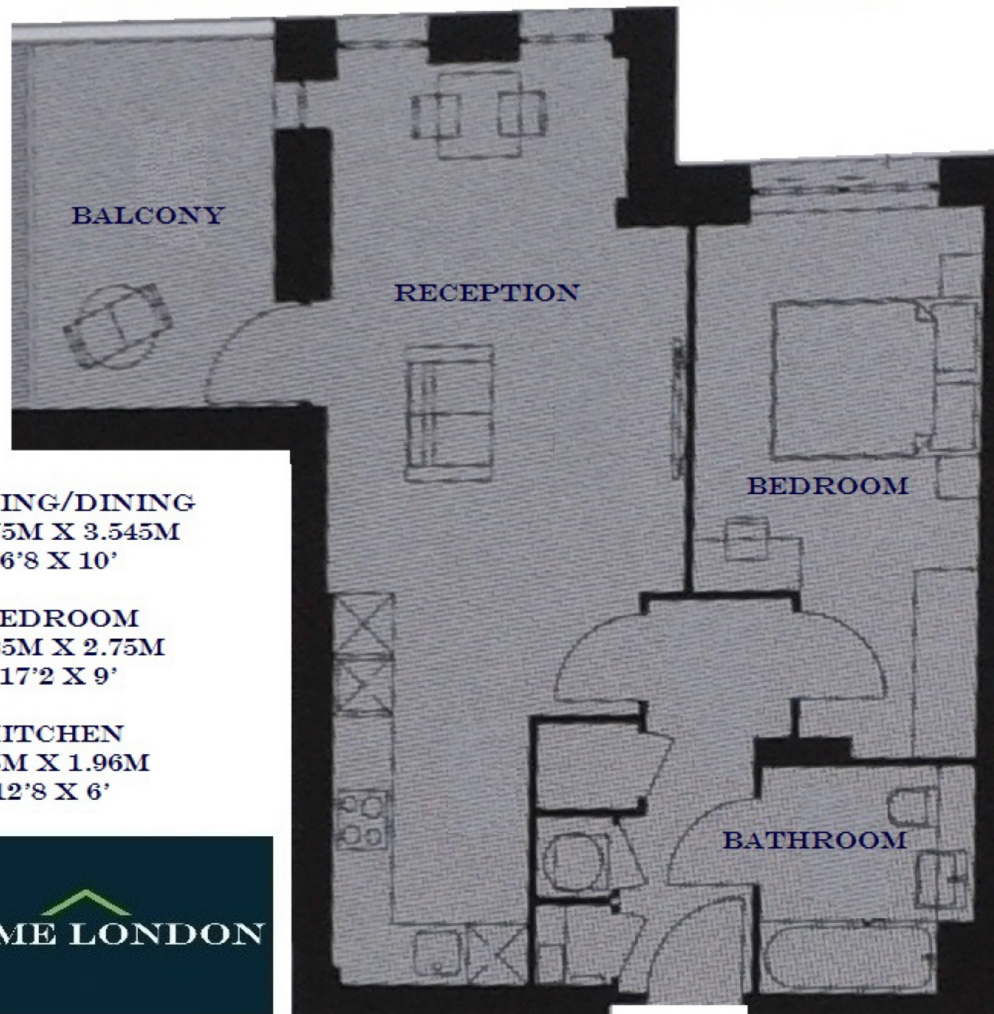




**COLUMBUS HOUSE, ENDERBY WHARF, GREENWICH SE10**

**SECOND FLOOR**

**GROSS INTERNAL AREA 564 SQ FT / 52.4 SQM**



**LIVING/DINING**  
5.075M X 3.545M  
16'8 X 10'

**BEDROOM**  
5.225M X 2.75M  
17'2 X 9'

**KITCHEN**  
3.85M X 1.96M  
12'8 X 6'

  
**PRIME LONDON**