



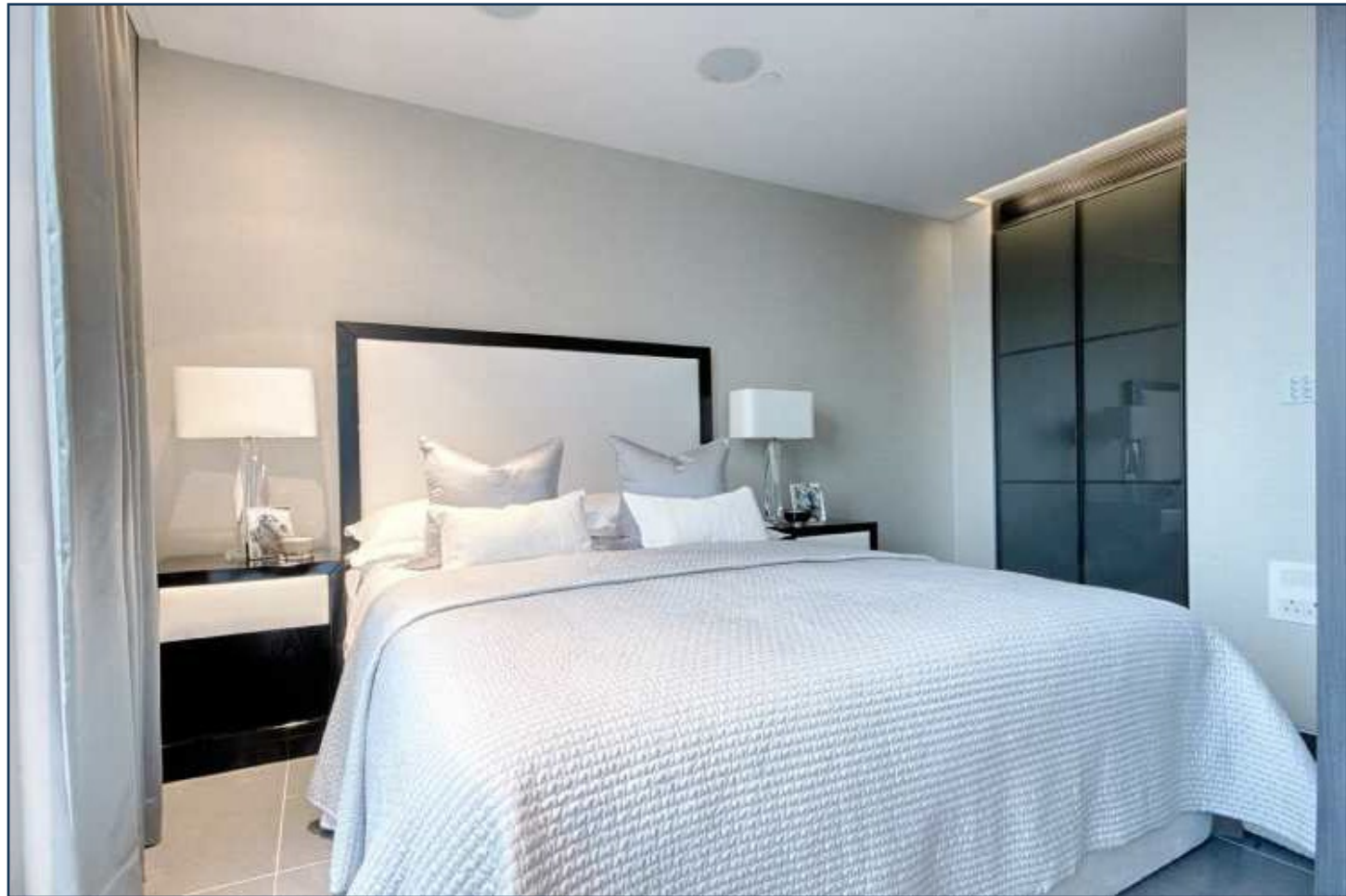
**THE TOWER, ST GEORGE WHARF, NINE ELMS**  
**FIXED ASKING PRICE £849,000**



A beautifully furnished one bedroom apartment for sale in the ultra high-specification One St. George Wharf, with no onward chain.

This building offers the highest in design and style, whilst being located on the water's edge in the heart of central London.

All apartments have valet parking inclusive, and the building offers dedicated door service, 24 hour concierge, private health club with gym, infinity swimming pool, sauna and steam room, business facilities including a boardroom with conference facility, a business lounge and a private screening room and landscaped exterior gardens.







GYMNASIUM

THE TOWER, ONE ST GEORGE WHARF  
FOURTH FLOOR  
GROSS INTERNAL AREA 487 SQ FT / 45.25 SQM

